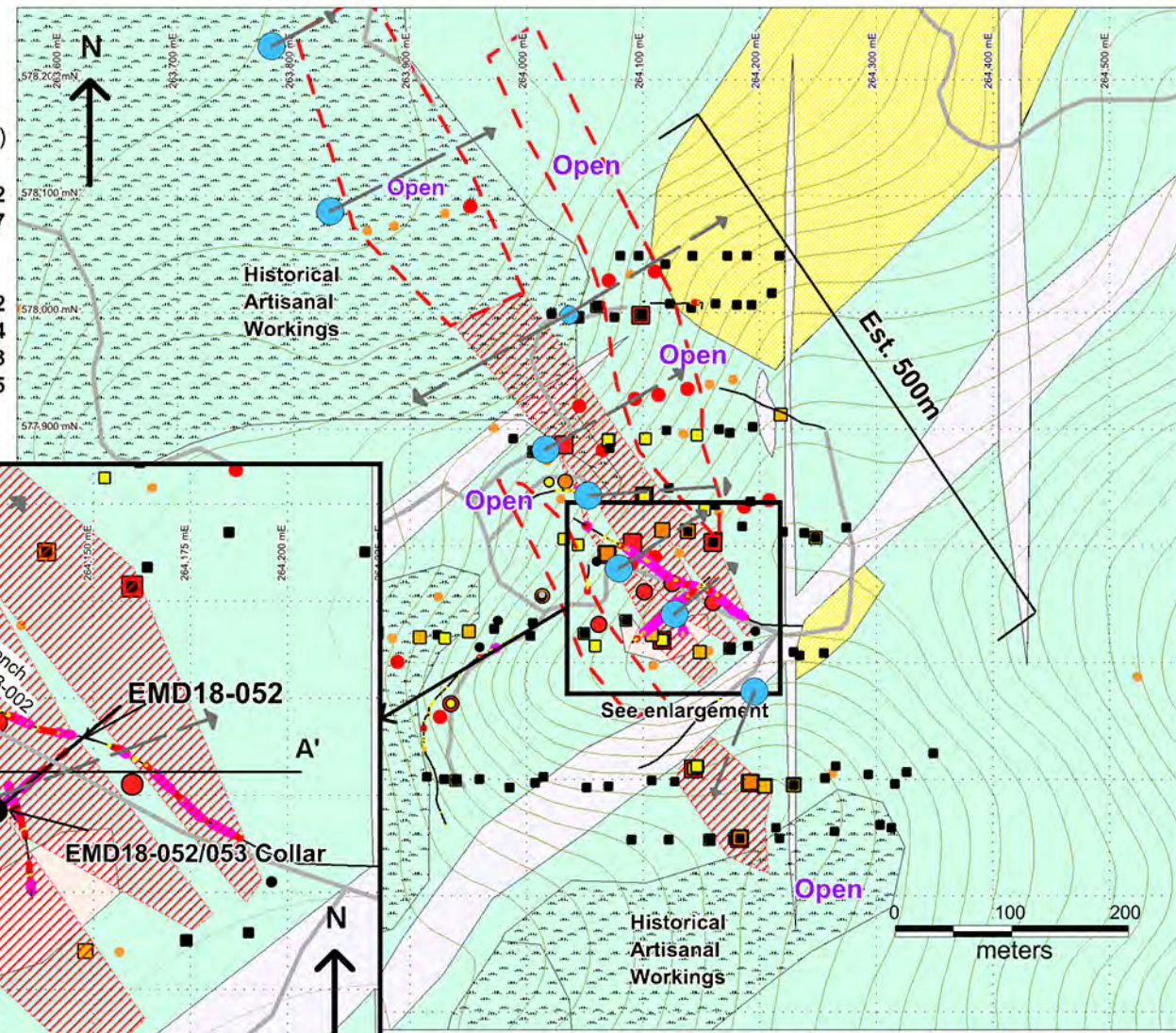
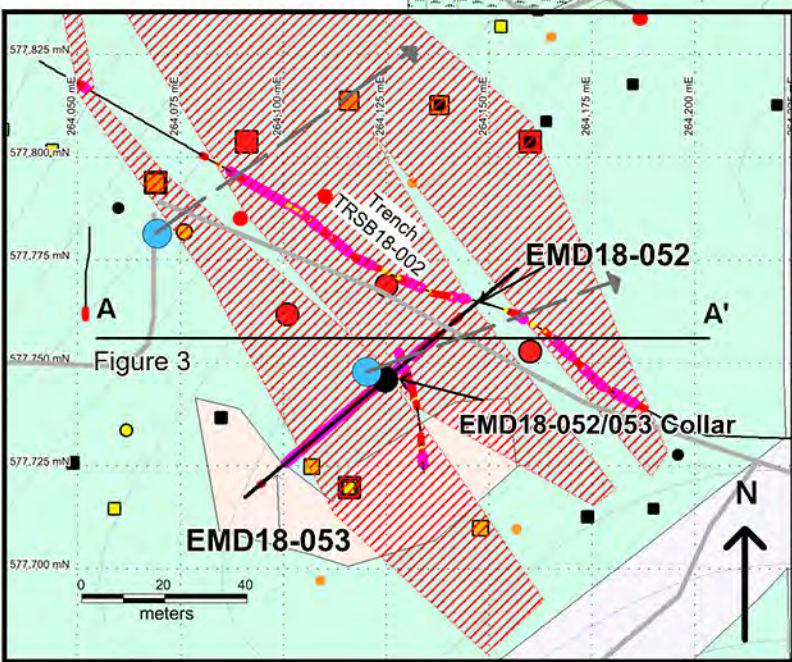




Figure 2 Eagle Mountain Gold Project : Salbora Target

Diamond Drill Hole Number	Interval (m)	Est. True Width (m)	Au (gpt)
EMD18-052 Incl.	44.7	17.0	2.82
	13.8		7.47
EMD18-053 Incl.	69.0	40.0	6.52
	9.0		8.74
	9.0		19.33
	3.0		14.95



Diamond Drill Holes (EMD)
Au g/t

- █ 1 to 172
- █ 0.5 to 1
- █ 0.3 to 0.5
- █ 0.1 to 0.3
- █ 0 to 0.1

Trench (TRSB)
Au g/t

- █ 1 to 172
- █ 0.5 to 1
- █ 0.3 to 0.5
- █ 0.1 to 0.3
- █ 0 to 0.1

Geoprobe (EMC)
Au g/t

- 1 to 100,000
- 0.5 to 1
- 0.3 to 0.5
- 0.1 to 0.3
- 0.001 to 0.1
- all others

Auger (EMA)
Au g/t

- 1 to 100,000
- 0.5 to 1
- 0.3 to 0.5
- 0.1 to 0.3
- 0.001 to 0.1
- all others

- Historical Auger >1g/t Au
- Historical Auger 0.5-1 g/t Au

Trail/Road

● Proposed Drill Hole Collar

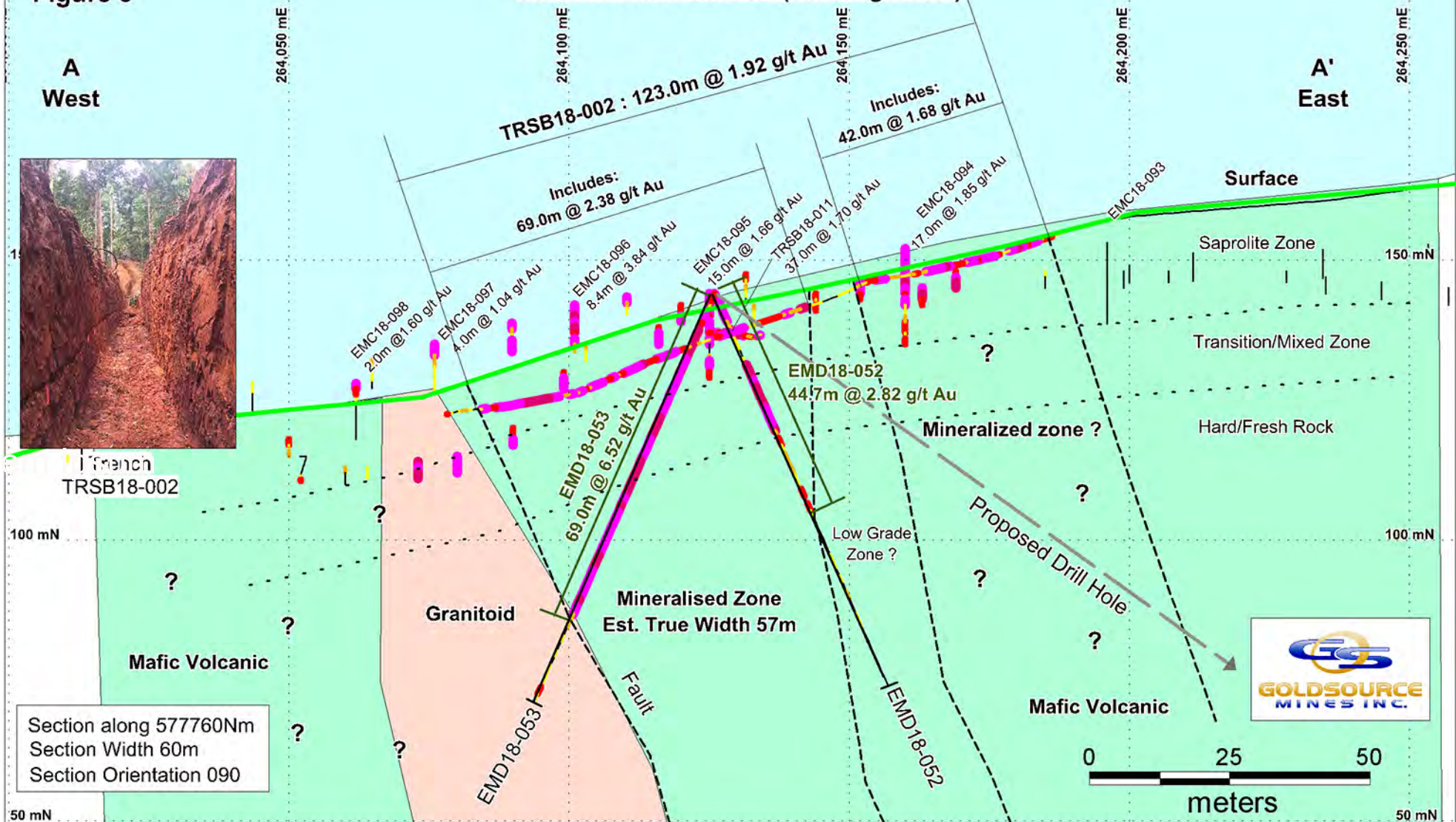
Lithology

- Mafic Volcanic
- Dolerite Dyke
- Meta sediment
- Main mineralized zone
- Other anomalous areas and projected extension of mineralised zone

Eagle Mountain Deposit, 1.5km ↓

Figure 3

Salbora Cross Section (Looking North)



Section along 577760Nm
Section Width 60m
Section Orientation 090



EMD18-052 (Saprolite)
9-12m (3.0m @ 13.6 g/t Au)



EMD18-053
64.5m (1.5m @ 5.36 g/t Au)



EMD 18-053
55.5m (1.5m @ 10.67 g/t Au)



EMD18-053
33.5m (1.5m @ 2.63 g/t Au)

Au G/T Au	Color
5 to 172	Dark Pink
1 to 5	Bright Pink
0.5 to 1	Red
0.3 to 0.5	Orange
0.1 to 0.3	Yellow
0 to 0.1	White