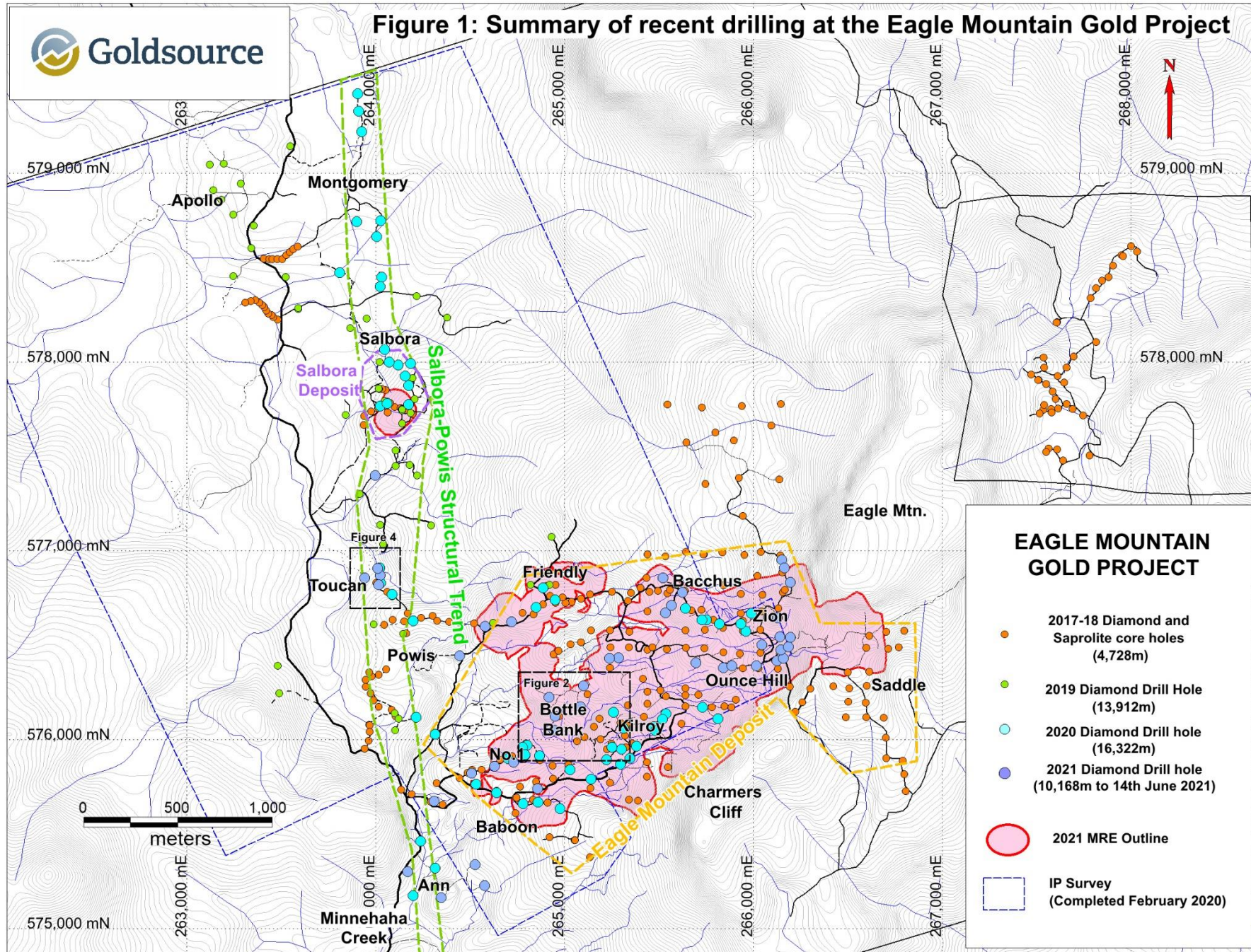


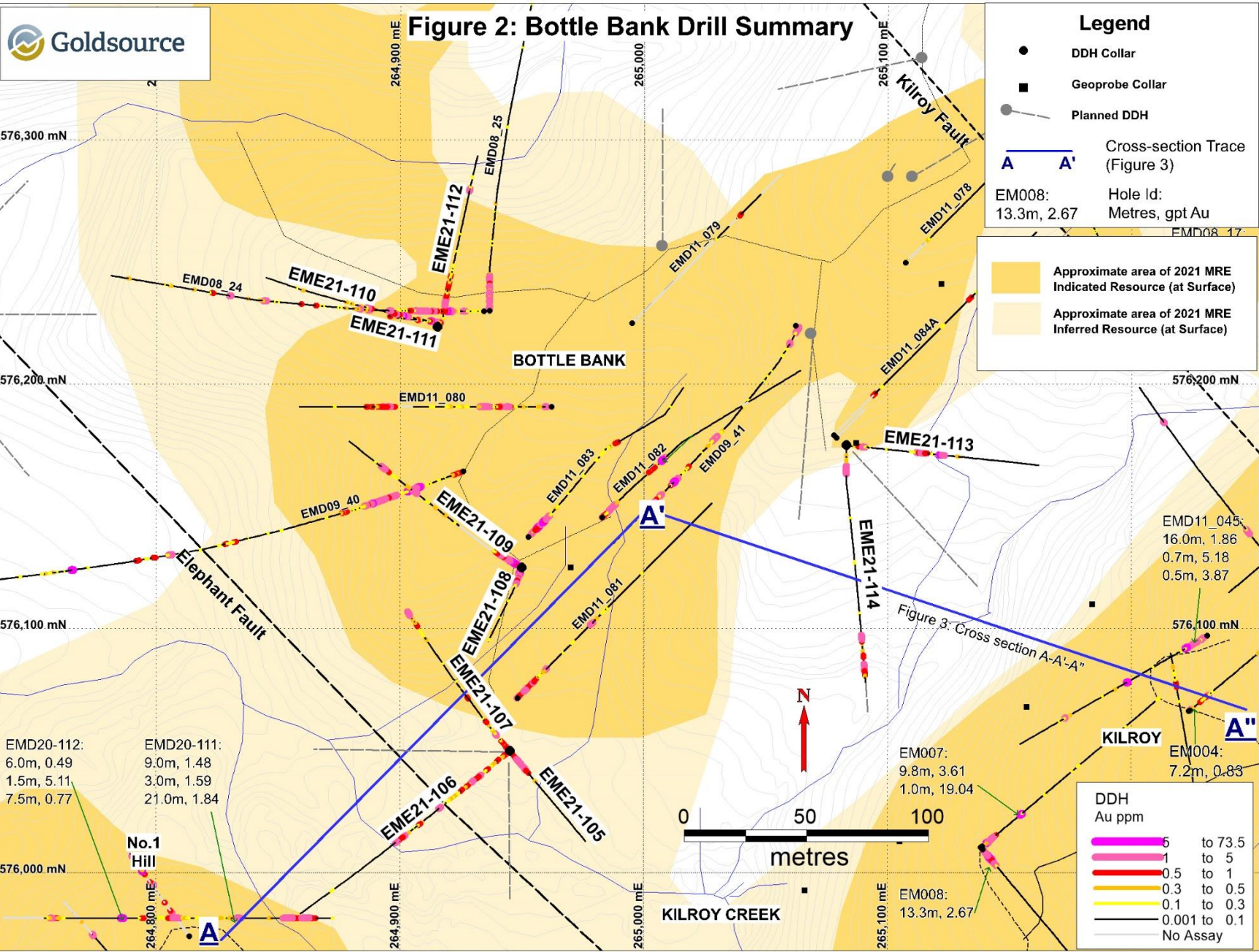


Figure 1: Summary of recent drilling at the Eagle Mountain Gold Project



EAGLE MOUNTAIN GOLD PROJECT

- 2017-18 Diamond and Saprolite core holes (4,728m)
- 2019 Diamond Drill Hole (13,912m)
- 2020 Diamond Drill hole (16,322m)
- 2021 Diamond Drill hole (10,168m to 14th June 2021)
- 2021 MRE Outline
- IP Survey (Completed February 2020)



Hole ID ⁽¹⁾	From (m)	To (m)	Drilled Interval (m) ⁽²⁾	Gold (gpt) ⁽³⁾
EME21-105	0.0	24.0	24.0	1.28
EME21-106	0.0	15.0	15.0	0.66
incl.	0.0	5.5	5.5	1.10
And	18.0	19.5	1.5	0.91
And	24.0	40.5	16.5	0.89
incl.	24.0	33.0	9.0	1.23
And	57.0	58.5	1.5	1.79
And	72.0	75.0	3.0	0.60
And	85.5	93.0	7.5	0.94
EME21-107	0.0	31.5	31.5	0.59
incl.	0.0	10.5	10.5	1.02
And	15.0	18.0	3.0	0.72
And	55.5	57.0	1.5	0.63
And	127.5	129.0	1.5	0.51
And	138.0	141.0	3.0	1.55
EME21-108	0.0	21.0	21.0	2.61
incl.	5.5	13.5	8.0	4.69
EME21-109	1.0	19.5	18.5	2.60
And	81.0	84.0	3.0	1.21
And	102.0	108.0	6.0	1.21
EME21-110	0.0	5.5	5.5	1.20
And	26.0	42.0	16.0	1.96
And	61.5	66.0	4.5	0.69
EME21-111	2.5	5.5	3.0	0.52
And	19.0	29.5	10.5	2.71
And	58.5	66.0	7.5	0.61
And	145.5	147.0	1.5	0.57
EME21-112	14.5	23.5	9.0	1.35
And	28.5	36.0	7.5	0.61
And	39.0	40.5	1.5	0.50
And	112.5	114.0	1.5	1.29
EME21-113	5.5	13.0	7.5	0.55
And	49.5	57.0	7.5	2.23
And	66.0	69.0	3.0	4.23
EME21-114	14.5	20.5	6.0	1.82
And	135.0	139.5	4.5	2.55
And	145.5	150.0	4.5	0.56
And	154.5	163.5	9.0	1.18

**Figure 3: Cross-Section through line A-A'-A''
Looking towards North North-west**

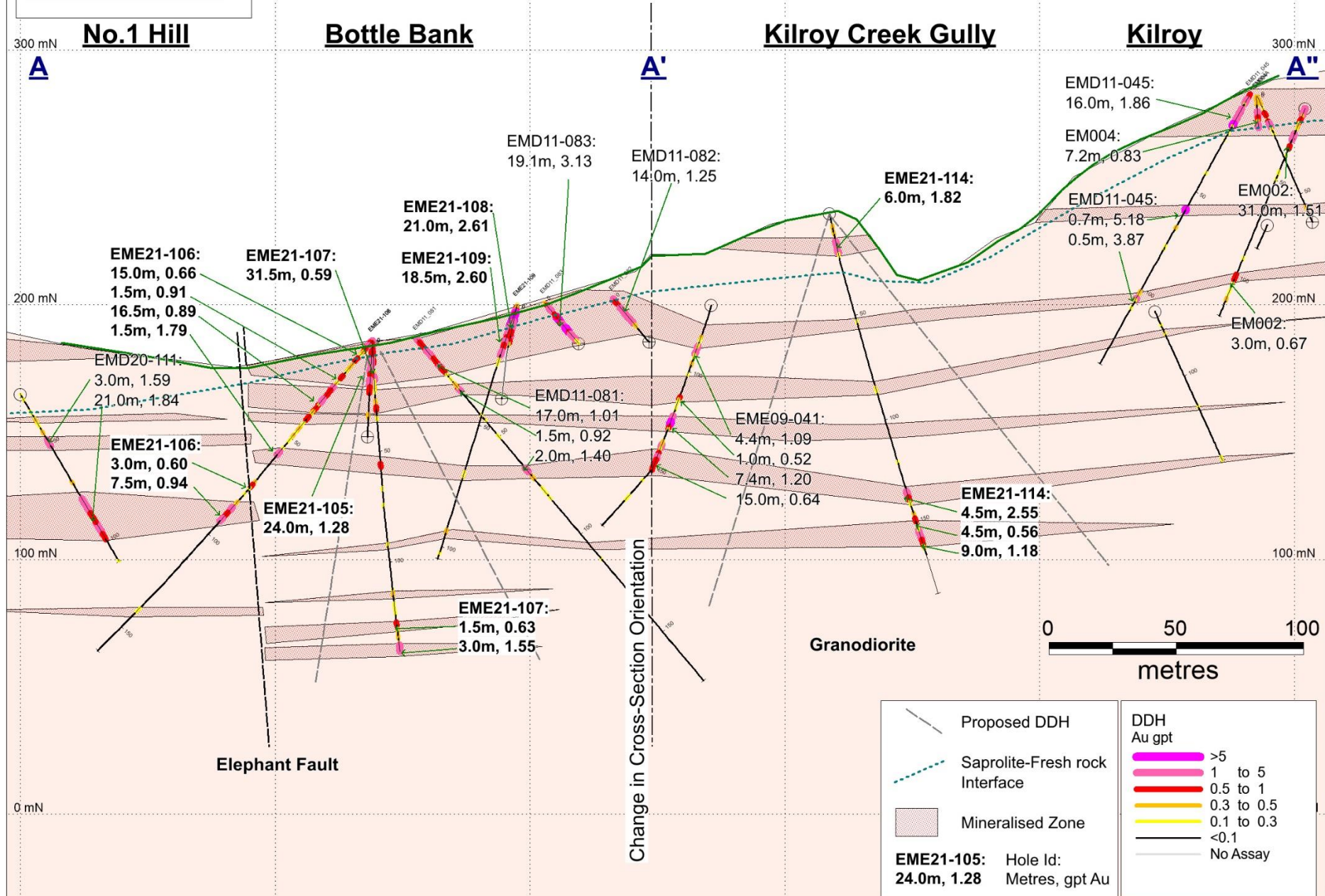
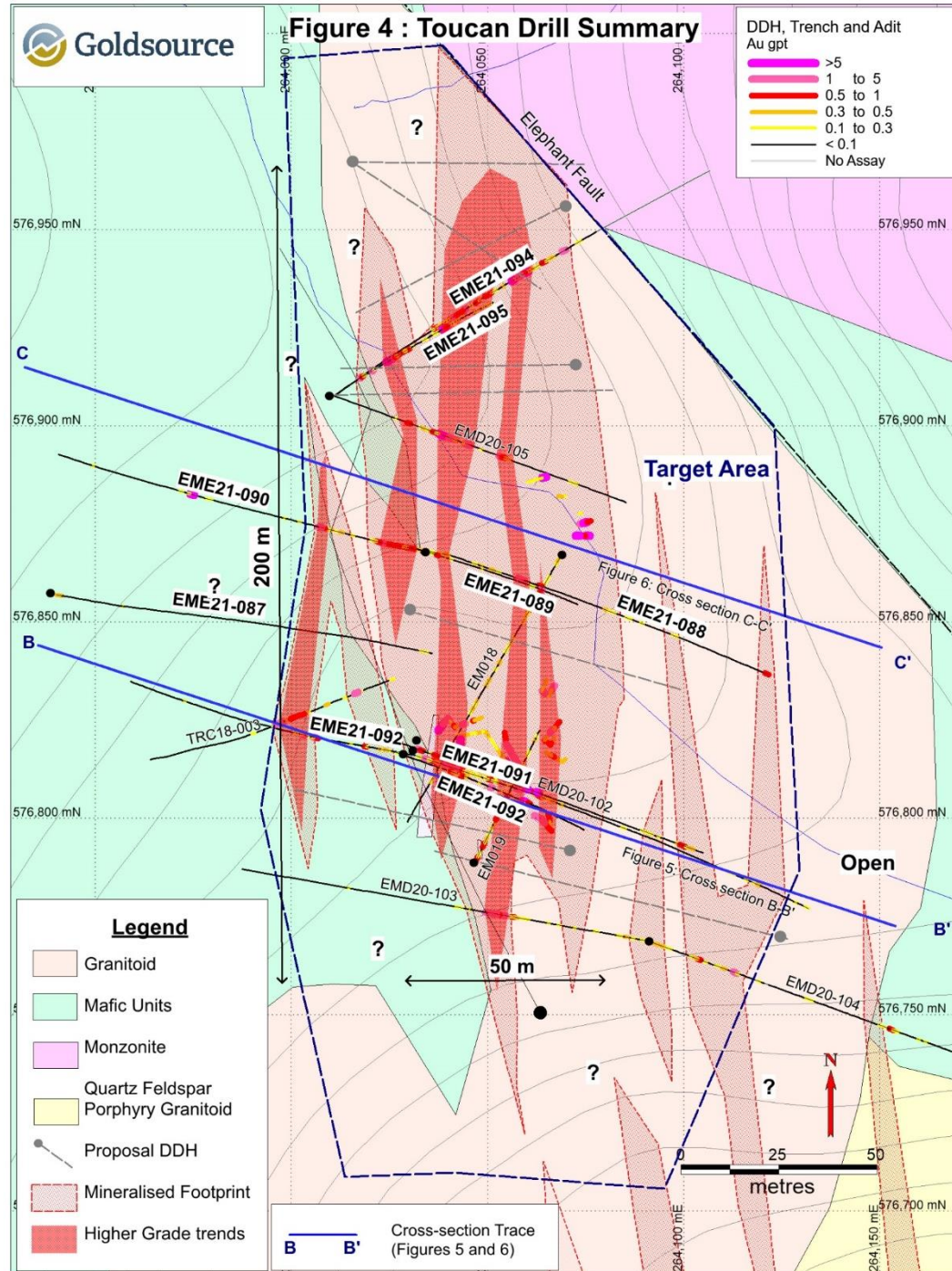


Figure 4 : Toucan Drill Summary



Hole ID ⁽¹⁾	From (m)	To (m)	Drilled Interval (m) ⁽²⁾	Au (gpt) ⁽³⁾
EME21-088	5.5	12.0	6.5	0.59
And	55.5	58.5	3.0	3.50
And	64.5	66.0	1.5	0.69
And	160.5	162	1.5	0.95
EME21-089	1.0	13.5	12.5	0.71
And	40.5	42.0	1.5	0.91
EME21-090	0.0	5.5	5.5	1.16
And	22.5	28.5	6.0	0.81
And	81	82.5	1.5	25.04
EME21-091	28.5	49.5	21.0	0.77
And	57	61.5	4.5	0.50
And	69	70.5	1.5	1.38
EME21-092	8.5	10.0	1.5	0.54
And	21.0	22.5	1.5	0.49
And	66.0	69.0	3.0	0.55
And	73.5	75.0	1.5	0.53
And	91.5	94.5	3.0	0.81
And	114.0	120.0	6.0	7.68
EME21-093	19.5	24.0	4.5	1.56
And	28.5	30.0	1.5	1.51
EME21-094	49.5	109.5	60.0	0.70
Incl.	49.5	64.5	15.0	0.72
And	85.5	96.0	10.5	2.58
EME21-095	27.0	31.5	4.5	0.74
And	37.5	39.0	1.5	3.10
And	51.0	72.0	21.0	1.86
And	100.5	106.5	6.0	18.14

Figure 5: Cross-Section B-B' Through Central Toucan, Looking North-North East

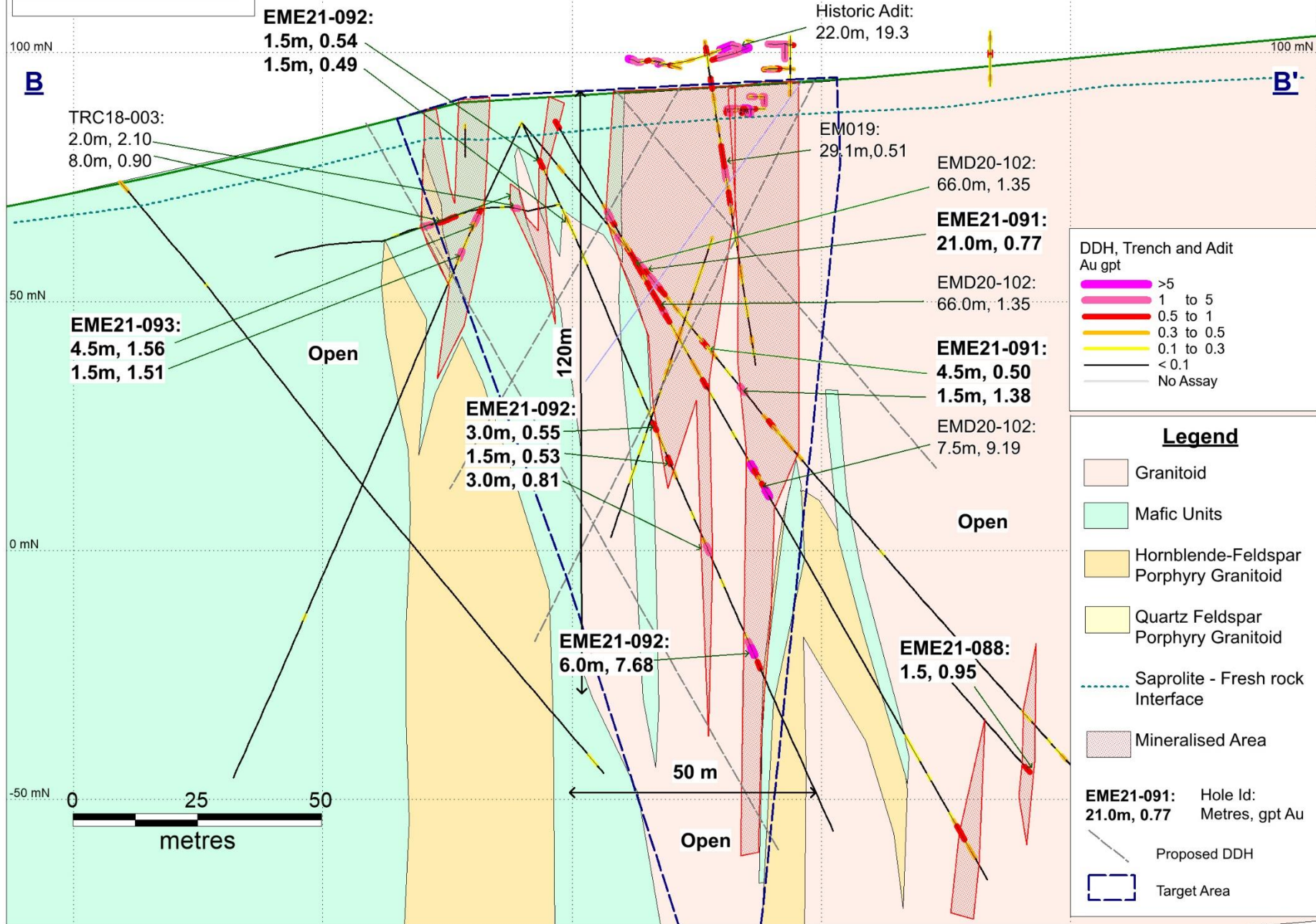


Figure 6: Cross-Section C-C' Through North Toucan, Looking North-North East

