



Figure 1: Summary of recent drilling at the Eagle Mountain Gold Project

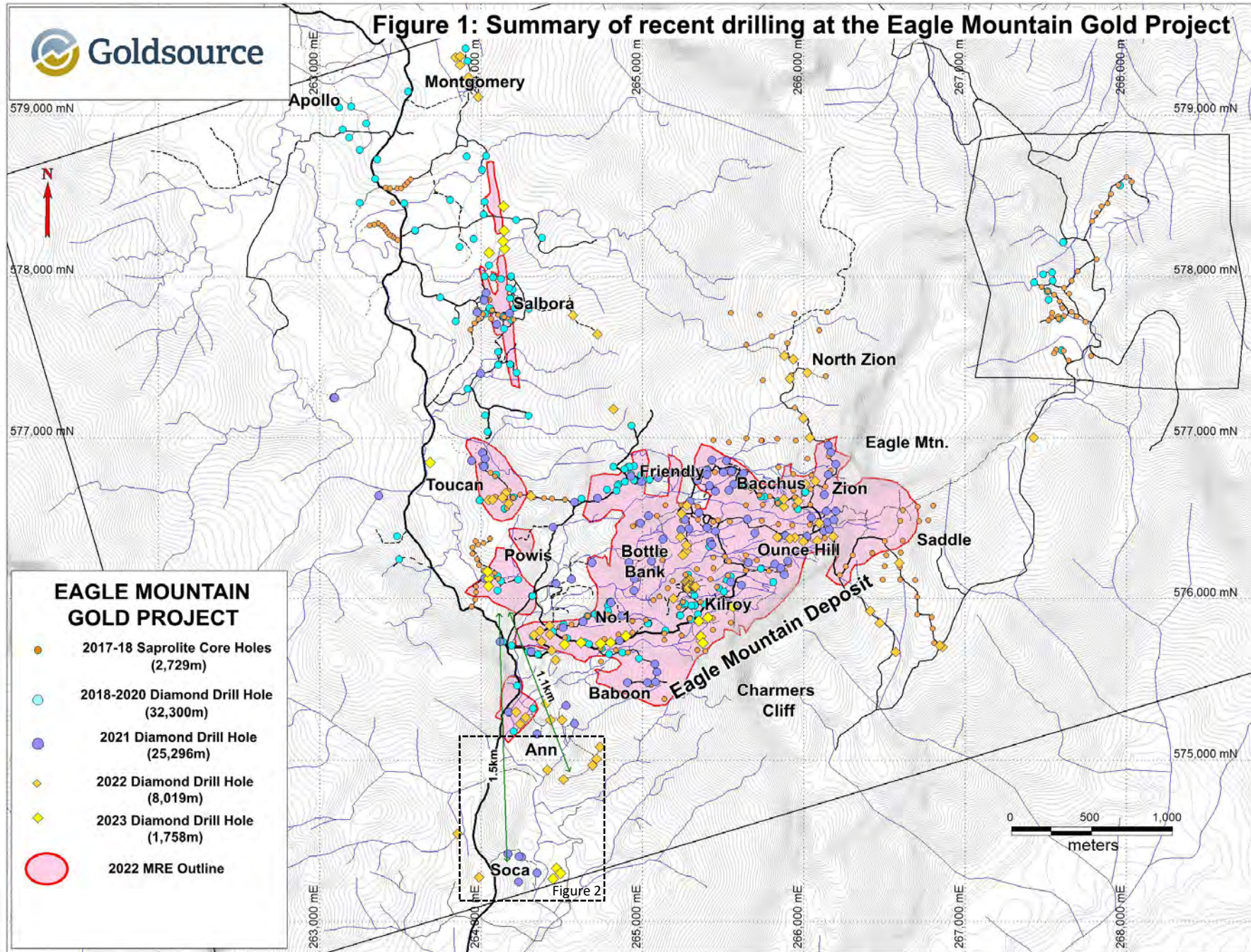
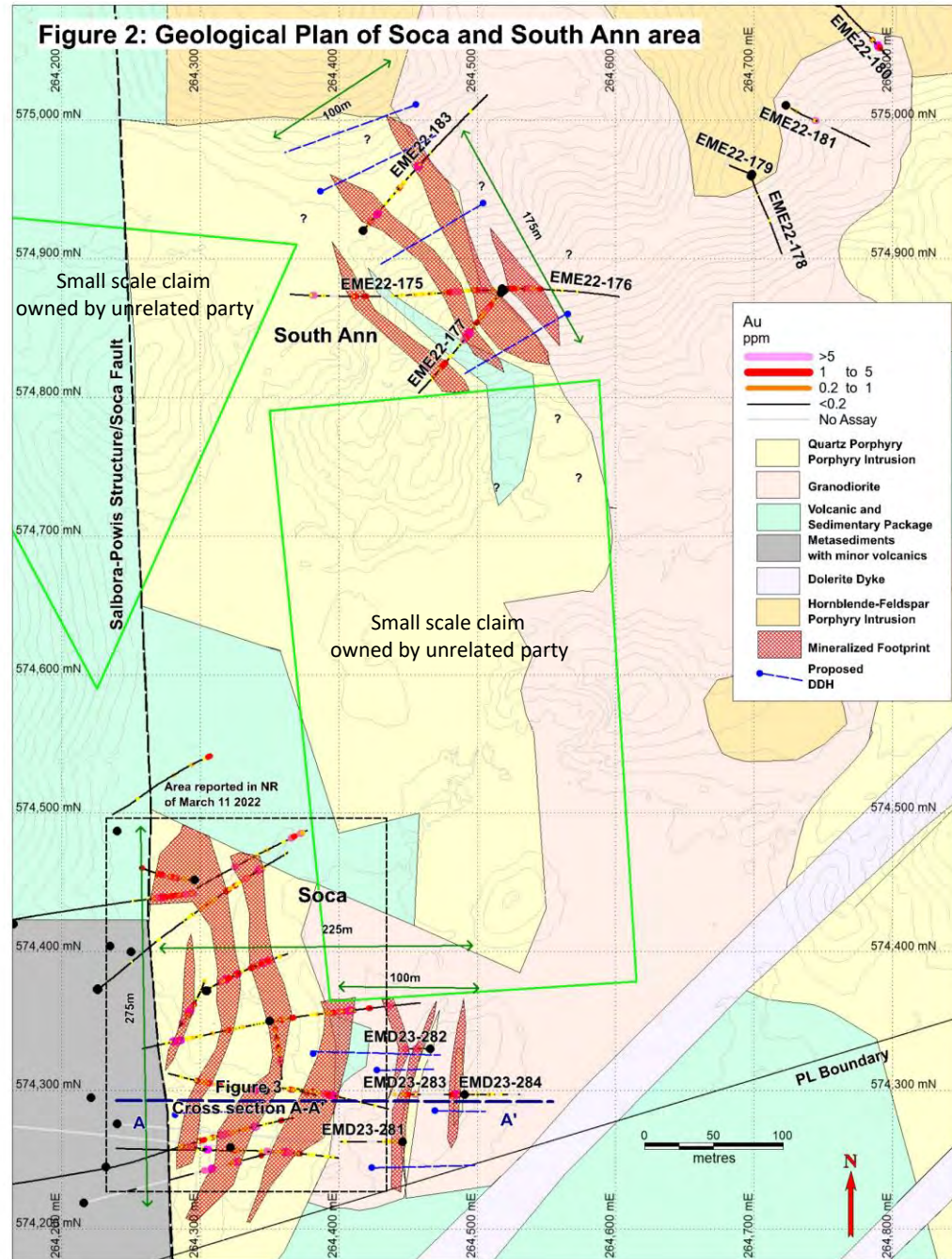


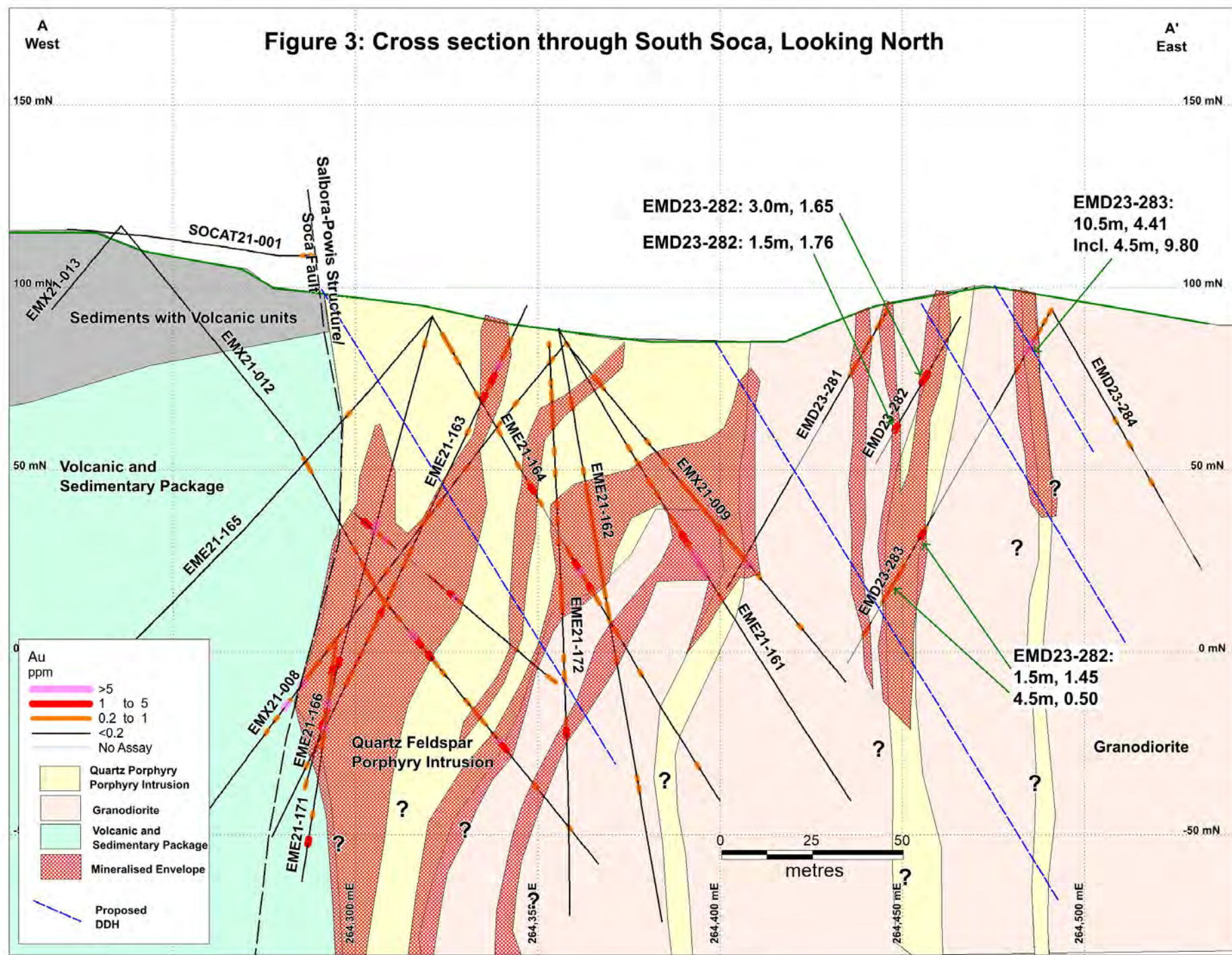
Figure 2: Geological Plan of Soca and South Ann area



Drill hole Intervals from Current release

Hole ID ⁽¹⁾	From (m)	To (m)	Drilled Interval (m) ⁽²⁾	Au (gpt) ⁽³⁾	ETW (m)
EME22-175	22.0	26.5	4.5	0.76	3.4
	31.0	35.5	4.5	0.54	3.4
	51.0	63.0	12.0	1.39	9.2
	132.0	133.5	1.5	0.87	1.1
	151.5	153.0	1.5	0.88	1.1
	163.5	165.0	1.5	0.76	1.1
EME22-176	205.5	207.0	1.5	1.40	1.1
	1.0	16.0	15.0	0.50	11.5
	26.5	32.5	6.0	0.65	4.6
EME22-177	43.0	44.5	1.5	0.61	1.1
	1.0	5.5	4.5	0.75	3.4
Incl. and	14.5	29.5	15.0	0.50	11.5
	25.0	28.0	3.0	1.12	2.3
	34.0	35.5	1.5	0.54	1.1
	43.0	44.5	1.5	0.93	1.1
	58.0	70.5	12.5	2.65	9.6
	58.0	59.5	1.5	9.87	1.1
EME22-180	64.0	70.5	6.5	2.74	5
	103.5	105.0	1.5	0.63	1.1
EME22-183	108.0	109.5	1.5	0.62	1.1
	82.5	84.0	1.5	0.80	1.3
EMD23-282	96.0	102.0	6.0	3.60	5.4
	0.0	2.5	2.5	0.79	1.9
	11.5	16.0	4.5	0.99	3.44
	24.0	25.5	1.5	7.32	1.1
	61.5	64.5	3.0	0.50	2.3
EMD23-283	93.0	94.5	1.5	8.94	1.1
	18.0	21.0	3.0	1.65	2.3
EMD23-284	34.5	36.0	1.5	1.76	1.1
	3.0	13.5	10.5	4.41	9.1
Incl.	9.0	13.5	4.5	9.80	3.9
	18.0	19.5	1.5	0.82	1.3
	70.5	72.0	1.5	1.45	1.3
	81.0	85.5	4.5	0.50	3.9

Figure 3: Cross section through South Soca, Looking North



Drill hole Intervals from Current release

Hole ID ⁽¹⁾	From (m)	To (m)	Drilled Interval (m) ⁽²⁾	Au (gpt) ⁽³⁾	ETW (m)
EMD23-282	18.0	21.0	3.0	1.65	2.3
	34.5	36.0	1.5	1.76	1.1
EMD23-283	3.0	13.5	10.5	4.41	9.1
	Incl.	9.0	13.5	4.5	9.80
	18.0	19.5	1.5	0.82	1.3
	70.5	72.0	1.5	1.45	1.3
	81.0	85.5	4.5	0.50	3.9

Drill hole Intervals from release on 11th March 2022

Hole ID ⁽¹⁾	From (m)	To (m)	Drilled Interval (m) ⁽²⁾	Au (gpt) ⁽³⁾
EMX21-008	60.0	61.5	1.5	0.59
	118.5	120.0	1.5	10.71
	126.0	127.5	1.5	5.02
EMX21-009	0.0	1.0	1.0	0.53
	49.5	84.0	34.5	0.76
	Incl.	78.0	79.5	1.5
EMX21-012	100.5	102.0	1.5	0.59
	123.0	124.5	1.5	1.06
	84.0	85.5	1.5	0.61
	111.0	112.5	1.5	0.76
EME21-161	117.0	118.5	1.5	0.52
	129.0	130.5	1.5	0.74
	139.5	148.5	9.0	9.29
	178.5	181.5	3.0	5.17
	208.5	210.0	1.5	0.56
	49.5	51.0	1.5	0.76
	66.0	79.5	13.5	4.70
EME21-162	43.5	69.0	25.5	0.54
	124.5	126.0	1.5	0.76
	13.0	28.5	15.5	1.67
	75.0	78.0	3.0	0.56
EME21-163	87.0	102.0	15.0	0.54
	111.0	115.5	4.5	0.56
	7.0	10.0	3.0	0.54
	54.0	55.5	1.5	1.52
	78.0	88.5	10.5	3.66
	99.0	102.0	3.0	0.58
	58.5	61.5	3.0	7.45
EME21-166	97.5	99.0	1.5	3.77
	114.0	117.0	3.0	0.82
	18.0	19.5	1.5	0.54
	45.0	46.5	1.5	0.98
	67.5	70.5	3.0	0.56
	73.5	76.5	3.0	0.64
	109.5	111.0	1.5	1.65