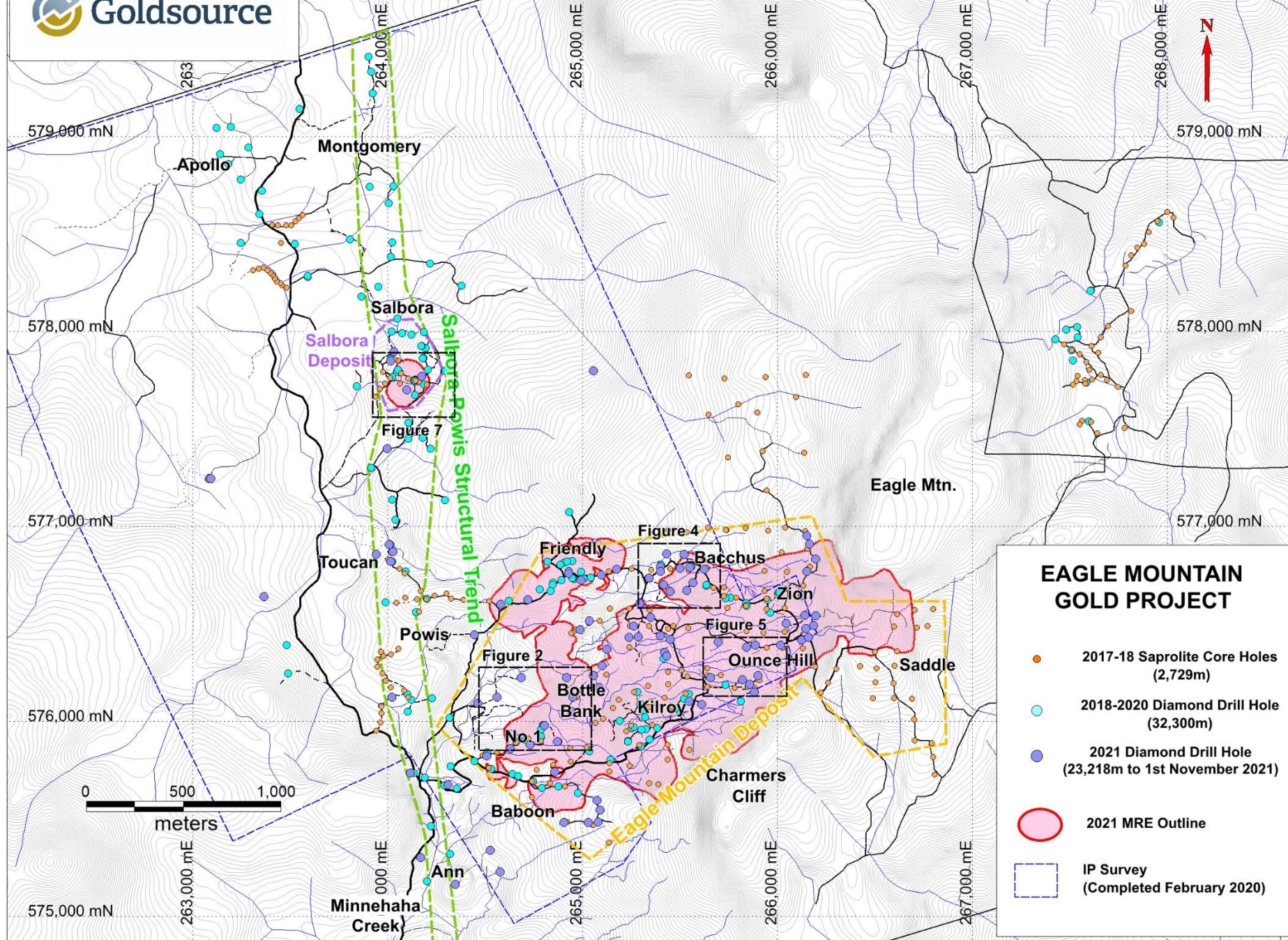
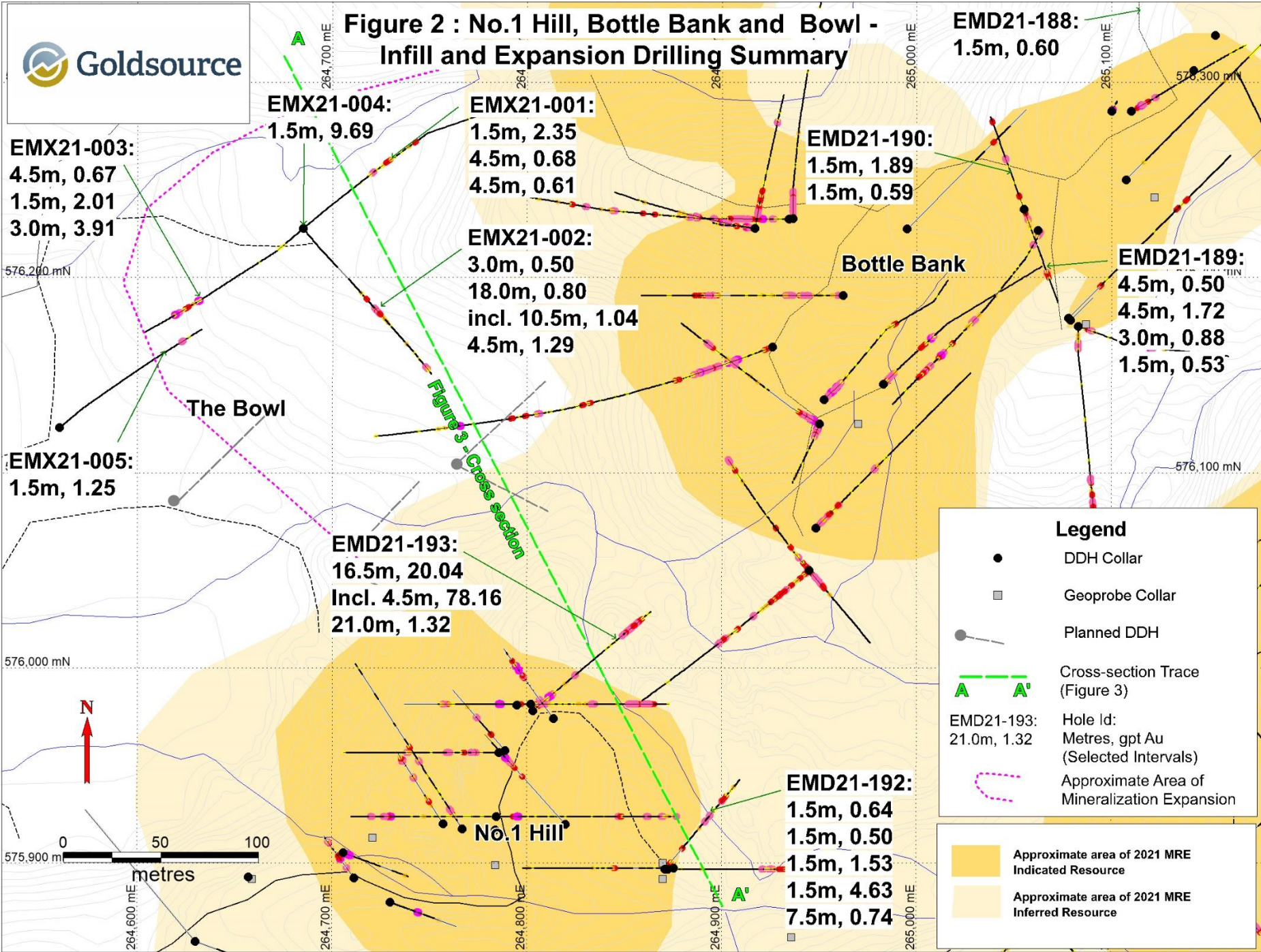


**Figure 1: Summary of recent drilling at the Eagle Mountain Gold Project**

**EAGLE MOUNTAIN GOLD PROJECT**

- 2017-18 Sapolite Core Holes (2,729m)
- 2018-2020 Diamond Drill Hole (32,300m)
- 2021 Diamond Drill Hole (23,218m to 1st November 2021)
- 2021 MRE Outline
- IP Survey (Completed February 2020)



# Figure 2 : No.1 Hill, Bottle Bank and Bowl - Infill and Expansion Drilling Summary



**EMX21-003:**  
4.5m, 0.67  
1.5m, 2.01  
3.0m, 3.91

**EMX21-004:**  
1.5m, 9.69

**EMX21-001:**  
1.5m, 2.35  
4.5m, 0.68  
4.5m, 0.61

**EMX21-002:**  
3.0m, 0.50  
18.0m, 0.80  
incl. 10.5m, 1.04  
4.5m, 1.29

**EMX21-005:**  
1.5m, 1.25

**EMD21-193:**  
16.5m, 20.04  
Incl. 4.5m, 78.16  
21.0m, 1.32

**EMD21-190:**  
1.5m, 1.89  
1.5m, 0.59

**EMD21-189:**  
4.5m, 0.50  
4.5m, 1.72  
3.0m, 0.88  
1.5m, 0.53

**EMD21-188:**  
1.5m, 0.60

**EMD21-192:**  
1.5m, 0.64  
1.5m, 0.50  
1.5m, 1.53  
1.5m, 4.63  
7.5m, 0.74

### Legend

- DDH Collar
- Geoprobe Collar
- Planned DDH
- Cross-section Trace (Figure 3)
- EMD21-193: 21.0m, 1.32
- Hole Id: Metres, gpt Au (Selected Intervals)
- Approximate Area of Mineralization Expansion

- Approximate area of 2021 MRE Indicated Resource
- Approximate area of 2021 MRE Inferred Resource



Figure 3 : Cross section A-A' through No.1 Hill and Bowl,  
Looking North-East

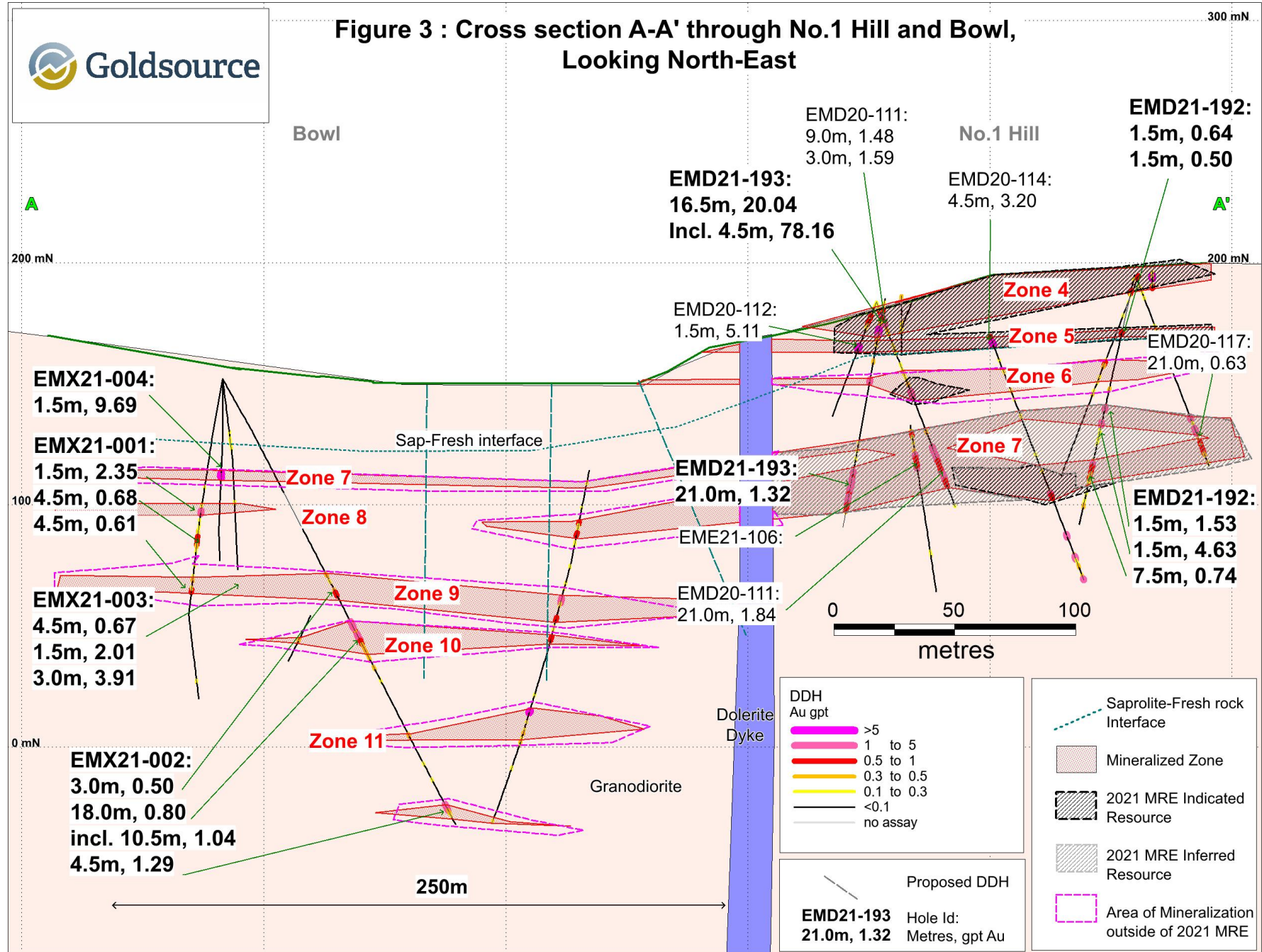
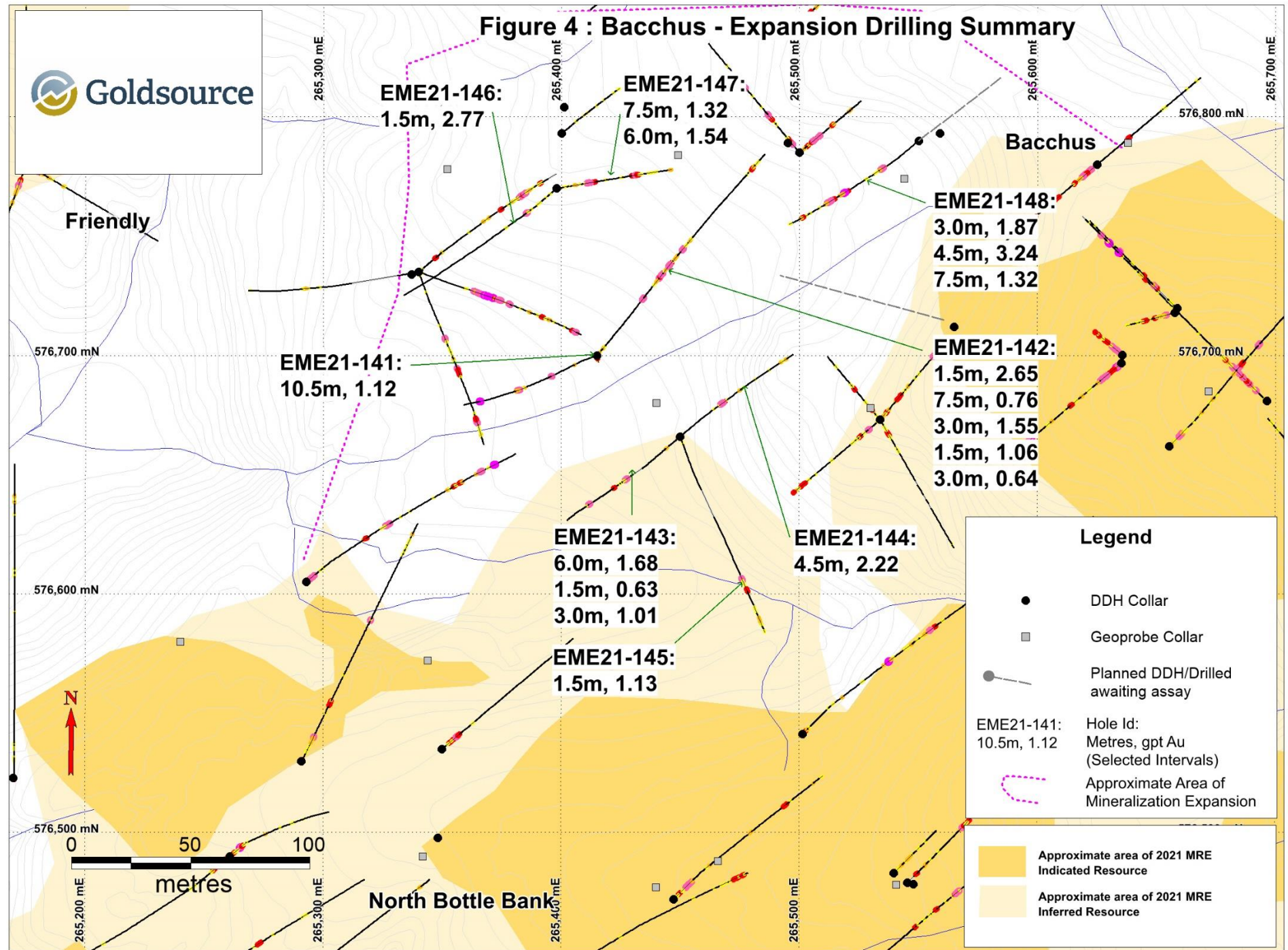




Figure 4 : Bacchus - Expansion Drilling Summary

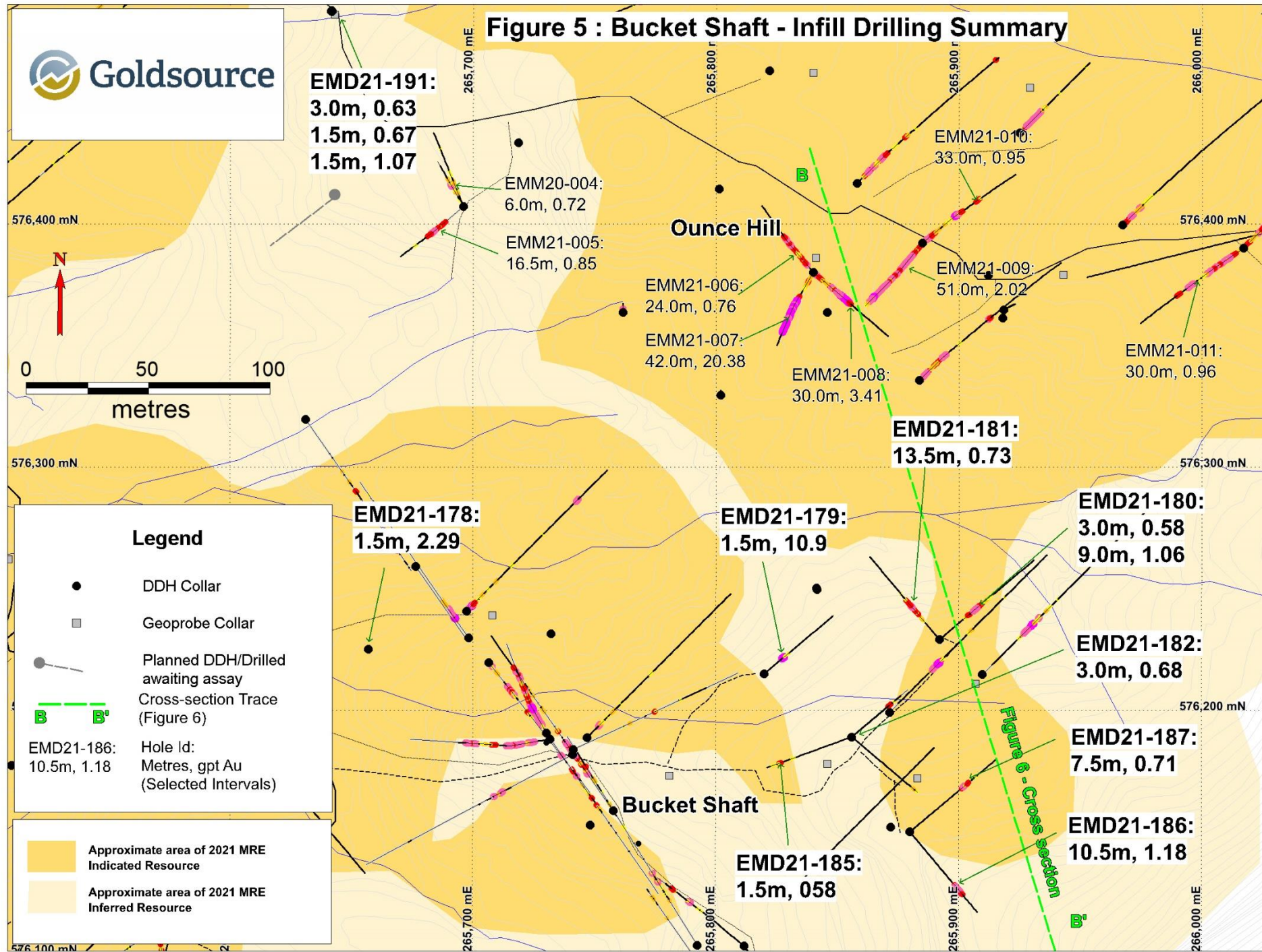


**Legend**

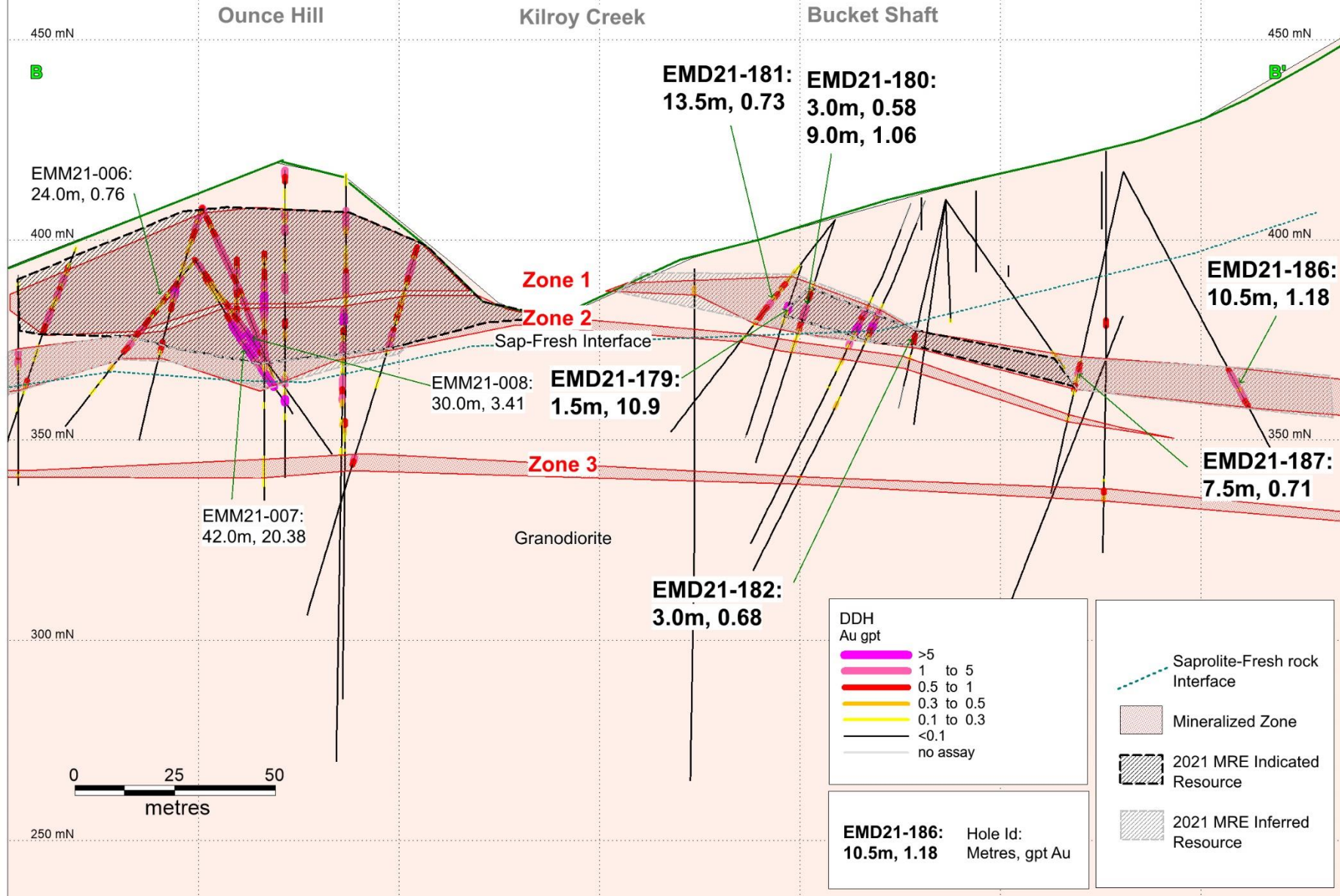
- DDH Collar
- Geoprobe Collar
- Planned DDH/Drilled awaiting assay
- EME21-141: Hole Id: 10.5m, 1.12 Metres, gpt Au (Selected Intervals)
- Approximate Area of Mineralization Expansion
- Approximate area of 2021 MRE Indicated Resource
- Approximate area of 2021 MRE Inferred Resource



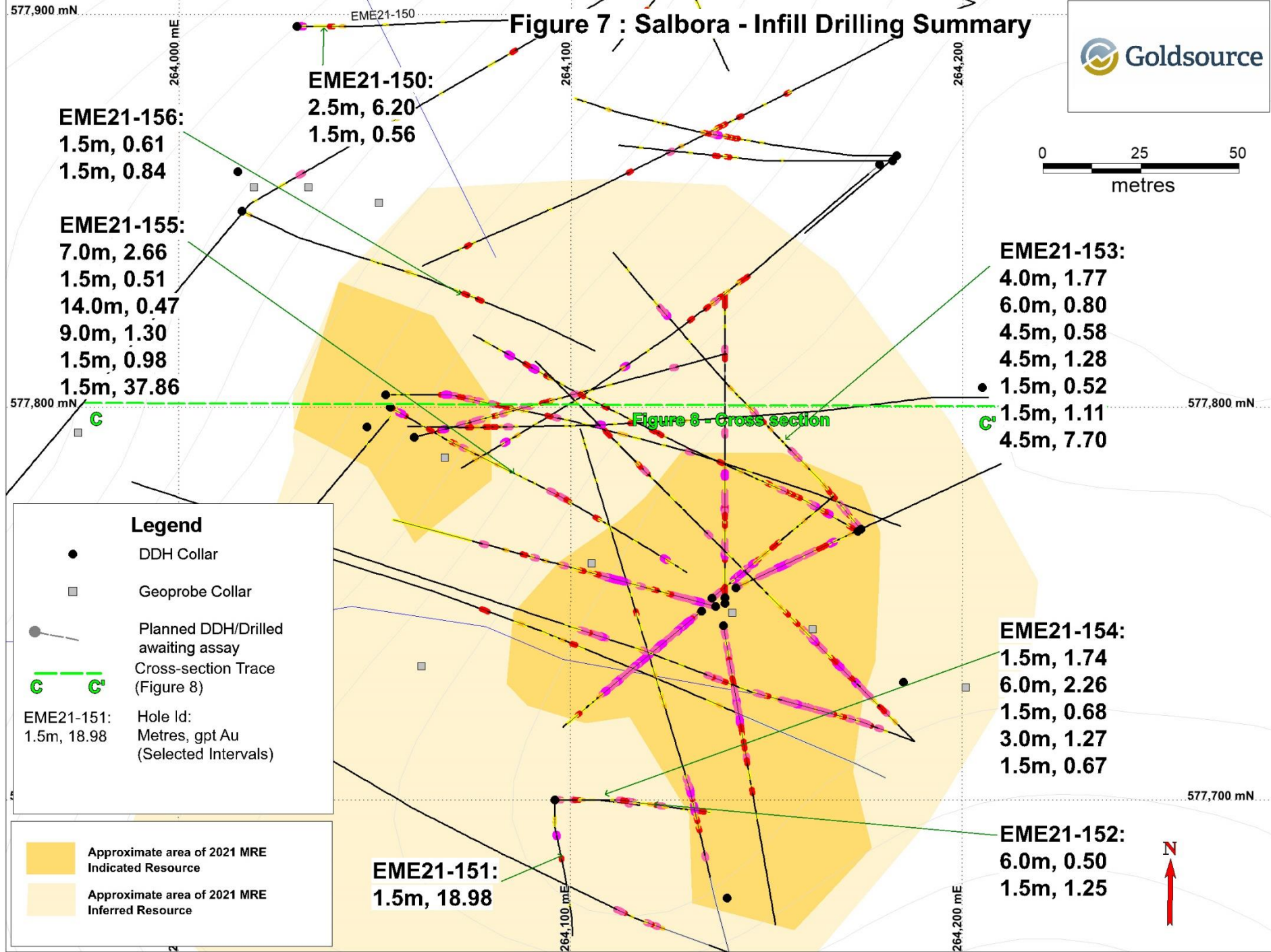
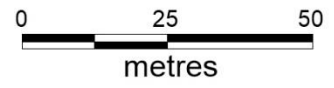
Figure 5 : Bucket Shaft - Infill Drilling Summary



**Figure 6 : Cross Section Through B-B' Ounce Hill and Bucket Shaft Looking North-East**



# Figure 7 : Salbora - Infill Drilling Summary



**Legend**

- DDH Collar
- Geoprobe Collar
- Planned DDH/Drilled awaiting assay
- Cross-section Trace (Figure 8)
- C C'**

EME21-151: Hole Id:  
1.5m, 18.98 Metres, gpt Au (Selected Intervals)

- Approximate area of 2021 MRE Indicated Resource
- Approximate area of 2021 MRE Inferred Resource

**EME21-150:**  
2.5m, 6.20  
1.5m, 0.56

**EME21-156:**  
1.5m, 0.61  
1.5m, 0.84

**EME21-155:**  
7.0m, 2.66  
1.5m, 0.51  
14.0m, 0.47  
9.0m, 1.30  
1.5m, 0.98  
1.5m, 37.86

**EME21-153:**  
4.0m, 1.77  
6.0m, 0.80  
4.5m, 0.58  
4.5m, 1.28  
● 1.5m, 0.52  
● 1.5m, 1.11  
4.5m, 7.70

**EME21-154:**  
1.5m, 1.74  
6.0m, 2.26  
1.5m, 0.68  
3.0m, 1.27  
1.5m, 0.67

**EME21-151:**  
1.5m, 18.98

**EME21-152:**  
6.0m, 0.50  
1.5m, 1.25

Figure 8 - Cross section



**Figure 8 : Cross Section Through C-C' Salbora Looking North**

