

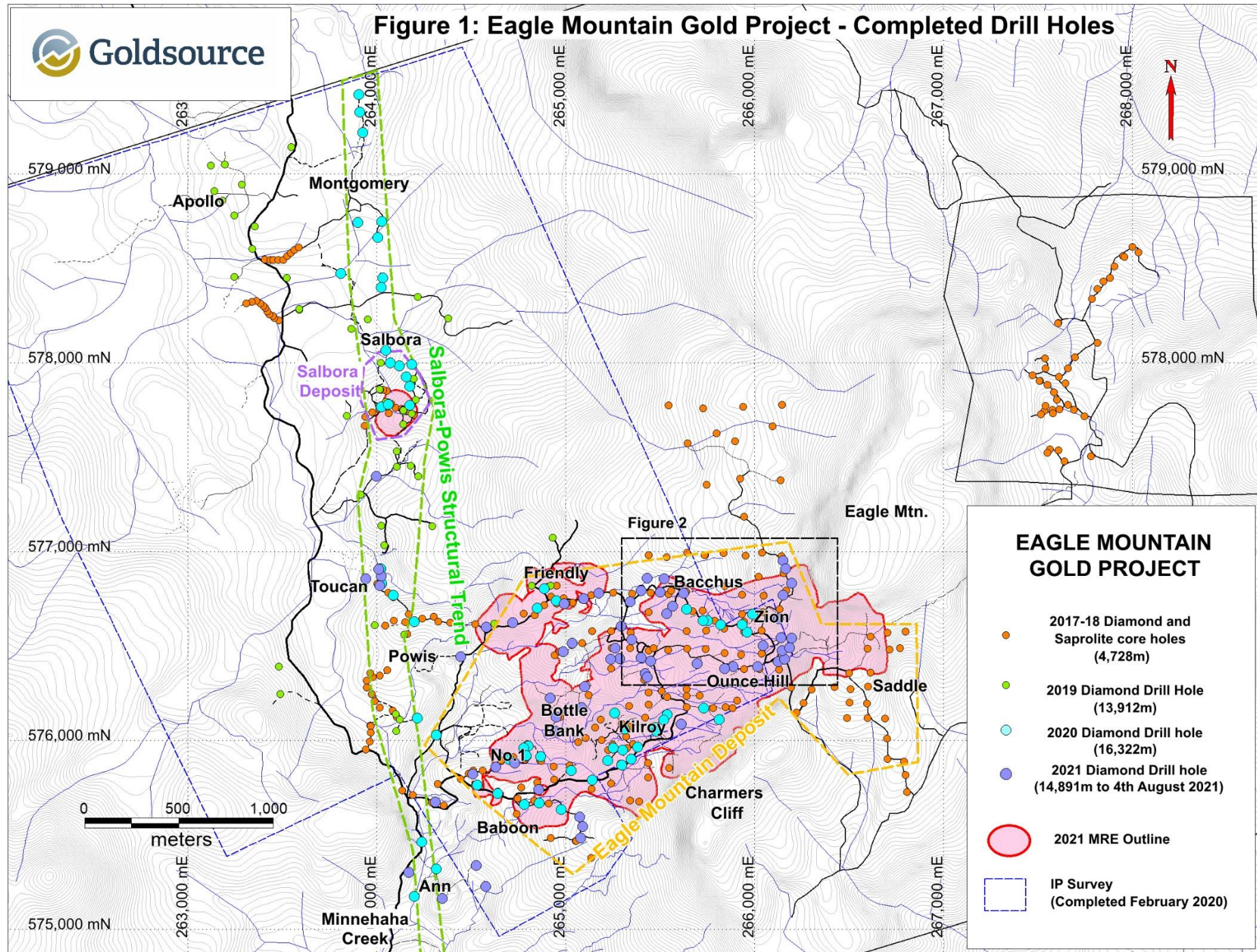
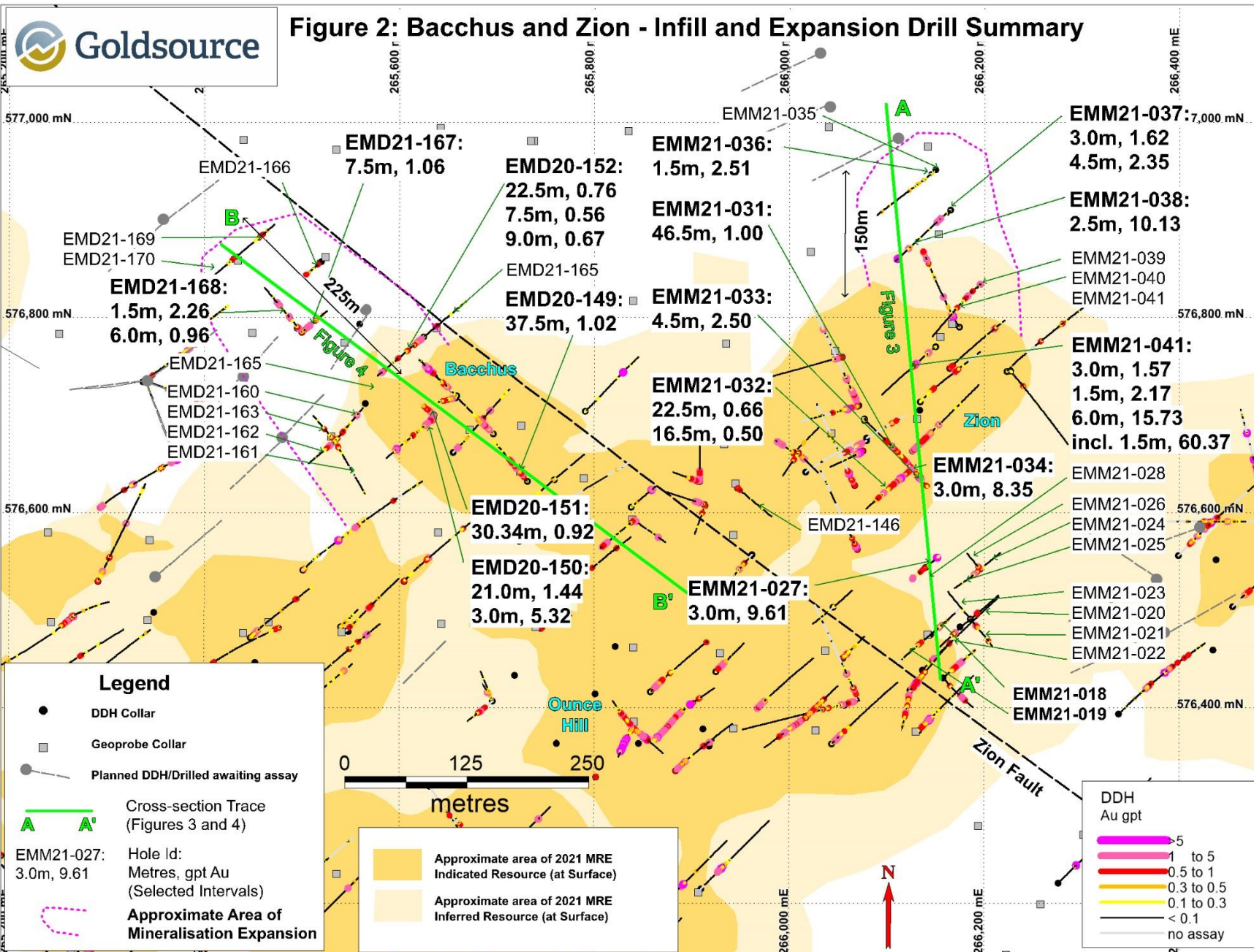
Figure 1: Eagle Mountain Gold Project - Completed Drill Holes


Figure 2: Bacchus and Zion - Infill and Expansion Drill Summary



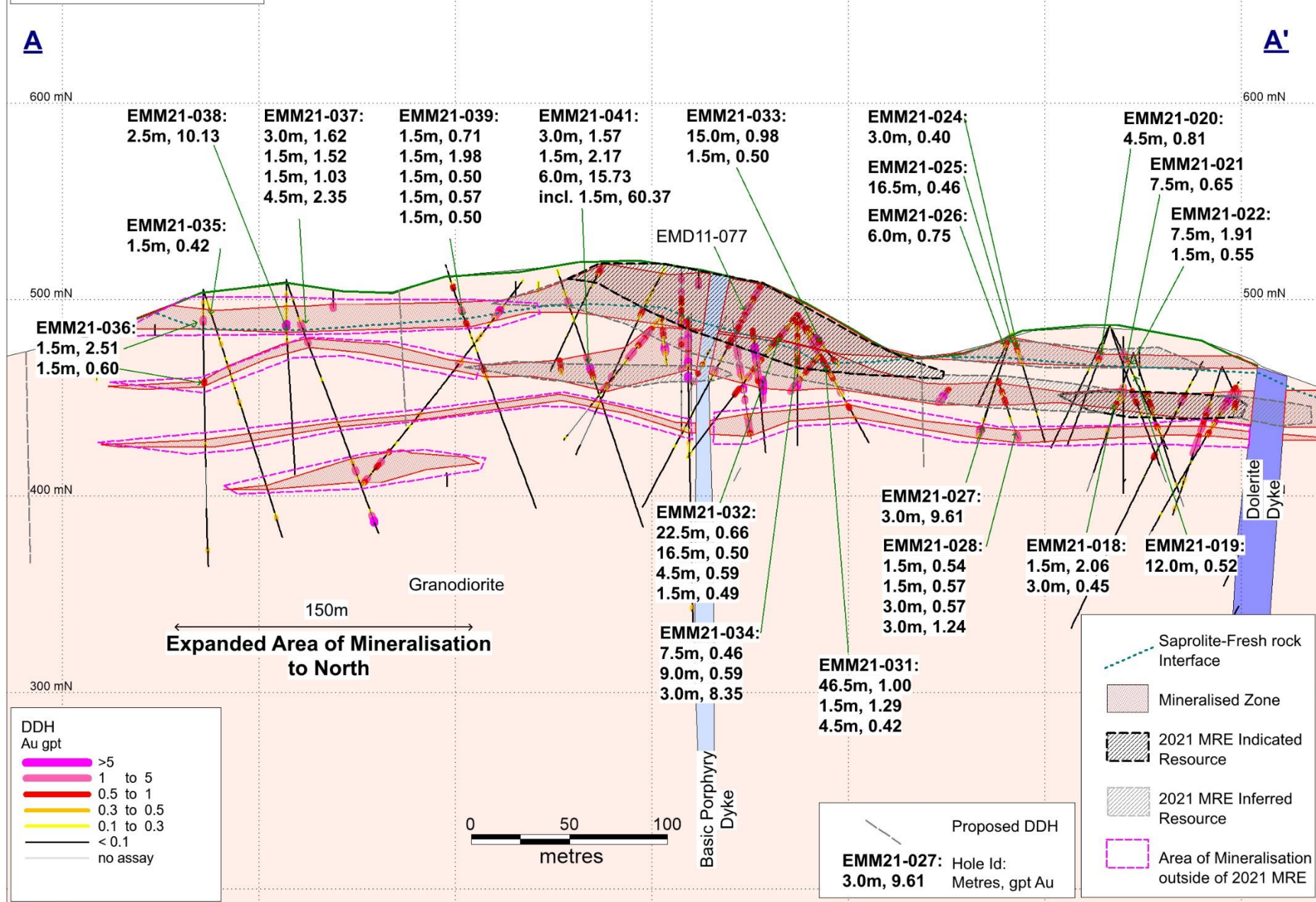
Bacchus Holes

Hole ID ⁽¹⁾	From (m)	To (m)	Drilled Interval (m) ⁽²⁾	Au (gpt) ⁽³⁾
EMM21-018	22.5	24	1.5	2.06
	30	33	3	0.45
EMM21-019	24	36	12	0.52
EMM21-020	16.5	21	4.5	0.81
EMM21-021	39	46.5	7.5	0.65
EMM21-022	16.5	24	7.5	1.91
Incl.	16.5	21	4.5	3.00
	58.5	60	1.5	0.55
EMM21-024	1.5	4.5	3	0.40
EMM21-025	0	16.5	16.5	0.46
EMM21-026	3	9	6	0.75
EMM21-027	30	33	3	9.61
EMM21-028	1.5	3	1.5	0.54
	7.5	9	1.5	0.57
	12	15	3	0.57
	33	36	3	1.24
EMM21-031	0	46.5	46.5	1.00
Incl.	15	27	12	1.83
	54	55.5	1.5	1.29
	61.5	66	4.5	0.42
EMM21-032	0	22.5	22.5	0.66
	30	46.5	16.5	0.50
	52.5	57	4.5	0.59
	99	100.5	1.5	0.49
EMM21-033	6	21	15	0.98
Incl.	16.5	21	4.5	2.50
	31.5	33	1.5	0.50
EMM21-034	4.5	12	7.5	0.46
	16.5	25.5	9	0.59
	33	36	3	8.35
EMM21-035	31.5	33	1.5	0.42
EMM21-036	15	16.5	1.5	2.51
	46.5	48	1.5	0.60
	132	133.5	1.5	0.42
EMM21-037	25.5	28.5	3	1.62
	36	37.5	1.5	1.52
	112.5	114	1.5	1.03
	139.5	144	4.5	2.35
EMM21-038	22.5	25	2.5	10.13
EMM21-039	21	22.5	1.5	0.71
	34.5	36	1.5	1.98
	42	43.5	1.5	0.50
	69	70.5	1.5	0.57
	73	74.5	1.5	0.50
EMM21-040	31.5	33	1.5	1.41
EMM21-041	18	21	3	1.57
	51	52.5	1.5	2.17
	57	63	6	15.73
Incl.	57	58.5	1.5	60.37

Zion Holes

Hole ID ⁽¹⁾	From (m)	To (m)	Drilled Interval (m) ⁽²⁾	Au (gpt) ⁽³⁾
EMD20-146	0.0	7.5	7.5	0.51
EMD20-149	9.0	46.5	37.5	1.02
EMD20-150	0.0	21.0	21.0	1.44
	42.0	43.5	1.5	0.59
	58.5	60.0	1.5	0.40
	76.5	79.5	3.0	5.32
EMD20-151	0.0	30.3	30.3	0.92
Incl.	0.0	19.5	19.5	1.26
EMD20-152	3.0	25.5	22.5	0.76
	40.5	48.0	7.5	0.56
	67.5	69.0	1.5	0.88
	103.5	112.5	9.0	0.67
EMD21-160	3.0	4.5	1.5	0.47
	7.5	9.0	1.5	0.69
	19.5	27.0	7.5	0.45
	67.5	72.0	4.5	0.71
EMD21-161	12.0	15.0	3.0	0.69
EMD21-162	12.0	13.5	1.5	1.06
	21.0	22.5	1.5	0.92
	81.0	95.2	14.2	0.40
Incl.	81.0	87.0	6.0	0.50
and	91.5	95.2	3.7	0.52
EMD21-163	9.0	13.5	4.5	0.54
	33.0	34.5	1.5	0.80
EMD21-164	6.0	7.5	1.5	0.60
	16.5	19.5	3.0	0.64
EMD21-165	33.0	36.0	3.0	0.79
EMD21-166	12.0	13.5	1.5	0.97
	58.5	60.1	1.6	0.67
EMD21-167	0.0	1.5	1.5	0.74
	12.0	13.5	1.5	0.51
	19.5	27.0	7.5	1.06
	31.5	33.0	1.5	1.13
	52.5	54.0	1.5	0.53
EMD21-168	9.0	10.5	1.5	2.26
	13.5	15.0	1.5	0.62
	36.0	42.0	6.0	0.96
	70.5	72.0	1.5	2.31
	78.0	79.5	1.5	1.33
EMD21-169	4.5	7.5	3.0	0.50
	67.5	69.0	1.5	0.76
	76.5	78.0	1.5	0.91
EMD21-170	3.0	4.5	1.5	0.56

Figure 3: Zion - Cross-Section through line A-A' Looking towards East



**Figure 4: Bacchus - Cross-Section through line B-B'
Looking towards North East**

